



For more information, please call (866) 767-IVDC or visit www.intercare.com

InterCare DX, Inc.

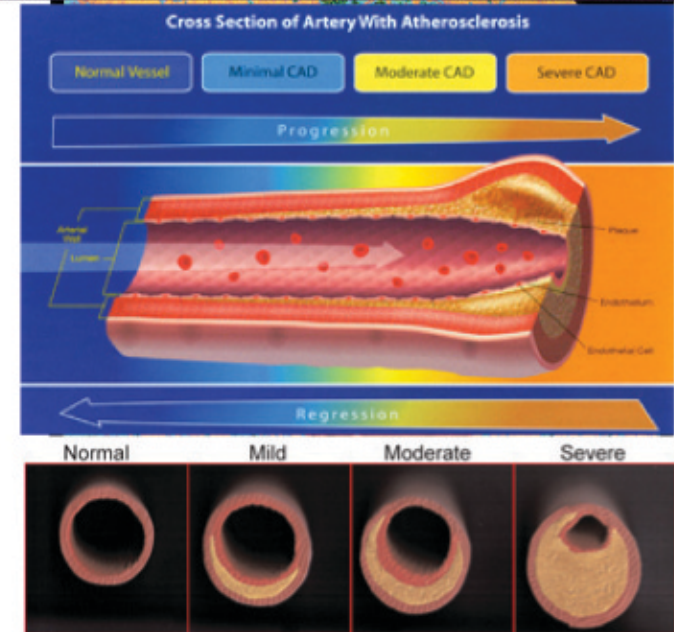
6080 Center Dr. Suite 640
Los Angeles, CA 90045

Tel: (310) 242-5634
Fax: (310) 242-5676

1. Kannel WB. Risk factors for atherosclerotic cardiovascular outcomes in different arterial territories. *Journal of Cardiovascular Risk*. 1994; 1: 33-339.
2. Raines J, Mercuri M, Helms R, Relber H, Herrington DM. Noninvasive technique to evaluate peripheral arterial compliance as a prediction of early coronary artery disease. *Circulation*. 1997; 96: 1-273. Abstract 1513.
3. Motoyama T, Kawano H, Kugiyama K, Okumura K, Ohgushi M, Yoshimura M, et al. Flow-mediated, endothelium-dependent dilatation of the brachial arteries is impaired in patients with coronary spastic angina. *Am Heart J*. 1997; 133: 263-267.
4. Uehata A, Lieberman EH, Gerhard MD, Anderson TJ, Ganz P, Polak JF, et al. Noninvasive assessment of endothelium-dependent flow-mediated dilation of the brachial artery. *Vascular Medicine*. 1997; 2: 87-92.



Cardiovascular Disease: How can you catch it before it gets this far?



InterCare Vascular Diagnostic Center

InterCare Vascular Diagnostic Center